



JESSICA  FIELDS
FINE JEWELRY



Jessica Fields Fine Jewelry is handmade in New York City and is inspired by historic pattern and design.

We use the finest of materials, with 8 different options of reclaimed metal. Our gemstones are conflict-free and in many cases fair trade.

We typically use the following stones:

- Sapphire (Blue, Pink, Yellow, Orange, Teal & Purple)

- Ruby

- Diamond (small stones are always G/H, VS quality)

- Tourmaline (Green, Pink and Teal)

- Garnet (Red & Tsavorite Green)

- Topaz (Blue & Pink)

- Chalcedony

Jessica Fields is known for their extensive ability to customize stones, metal and design, so please inquire about other personalized options.



Beady Blossom & Flower Collections

With their delicate texture and a sprinkling of gems, the pieces in the Beady Blossom and Flower Collections catch the light and appear to glisten. Inspired by Greco-Roman jewelry and mandala patterns, this collection is meant to be worn day into night and appeals to those who like dainty and very wearable pieces.



BEAR01-0



BEAE05-12



BEAE10-33



BEAE01-12



BEAE12-26



BEAN09-12



BEAE09-12



BEAE13-12



BEAN01-12



BEAN08-26



FLOE03-26



BEAN02-27



BEAE11-33



BEAN11-12



FLON03-26



FLON02-27



Clover Collection

Luck abounds in this collection with its four lobed clover available in 3 different sizes and an endless number of stone and gold color combinations. The necklaces and bracelets, which feature stones on both sides of the clovers, lend themselves beautifully to being layered. Create your own custom combination with prices by the clover.



CLON01-12



CLOE17-33



CLOE02-12



CLOE06-12



CLOE23-12



CLOE19-33



DOUBLE-SIDED CLOVER CHAINS



CLOE09-12



CLON18-33



CLOB04-26



CLOE08-12



CLOE15-12



CLOP03-12 & MISN03-22



CLON22-12C



CLON01-12, CLON24-12, CLON17-12



CLON16-33



CLOE24-12



Bubble Collection

The Bubble Collection is one of the classic lines from Jessica Fields. It is reminiscent of the texture in Classical Greek jewelry and lends itself to being customized with different metal and stone combinations. This line includes an ever-growing grouping of hoops with detachable drops.



BUBB03-0



BUBE13-6



BUBE13-27



BUBE15-12



BUBE06-0



BUBE16-12



BUBB06-27, BUBB11-12, BUBB12-0, BUBB15-12



BUBN17-12



BUBE16-12



BUBN09-26



BUBE08-0 & ENHR01-22



BUBE08-0 & ENHR02-33



BUBE08-0 & ENHR03-33



BUBE08-0 & ENHR04-22



BUBE08-0 & ENHR05-23



BUBE08-0 & ENHR08-31



BUBE13-27 & ENHR09-14



BUBE08-0 & ENHR07-33



BUBE15-12 & ENHR15-12



BUBE08-0 & ENHR06-10



BUBE08-0 & ENHR21-19



BUBE15-12 & ENHR20-27



Etruscan Collection

With lush, high-carat gold and soft undulating lines, this collection melds antique and historic jewelry with modern wearability. The beautiful gems invoke a sense of stained glass and whimsy.



EUTP01-26



EUTE01-22



EUTE04-28



EUTE03-0



EUTE08-7



EUTN10-30



EUTN01-0



EUTE13-23



EUTN03-13



EUTE07-27



EUTB01-0



EUTE05-12



EUTE10-31



EUTE14-12C



EUTP04-12C



EUTE14-27



EUTE07-27



EUTN09-12



EUTE14-31 custom



Fez & Marrakech Collections

Inspired by the undulating and geometric patterns of Moroccan tilework, these two collections incorporate custom carved gemstones and subtle ombre stone layouts. Customizable in just about any color combinations, these styles provide a full range of modest to show-stopper items.



FEZE05-26



FEZE04-26



FEZE01-12



FEZN02-26



MARE01-0



MARN02-12



MARN03-12



Lotus and Wreath Collections

The Lotus and Wreath collections are intended to be mixed and matched and lend themselves to a variety of stone options, ranging from subtle ombre effects, vibrant confetti color combinations, or classic-single gemstone versions. Utilizing a mixture of cabochon, brilliant-cut, and rose-cut stones, these collections are meant to evoke the feeling of stained glass.



WREE07-12C



LOTE03-31



LOTE02-10



LOTE01-12C



LOTE01-31



LOTN04-31



LOTE04-31



LOTN01-14



LOTN09-31



WREN02-12



WREN04-33



WREN01-33



WREN03-33



CLON05-12



JRIN05-27



WREE01-12



WREE02-27



WREE02-12B



WREE06-12C



WREN03-33



WREN03-33



WREE04-27



WREN05-12C



Ring Collection

Jessica Fields is sought out for her unique bands, stackable and commitment rings. With an almost unlimited number of mix-and-match combinations, customers can create their perfect set. All the rings are offered in our three gold colors, platinum or two-tone. The diamond melee is always G/H, VS. There are an endless number of gemstone colors that can be custom ordered.





BUBR25-12



BUBR25-27



BUBR25-27



BUBR25-27



BUBR25-14



BUBR25-26



BUBR28-12



BUBR34-27



BUBBLE BANDS



JRIN20-12, JRIN25-27 & JRIN20-27



BUBR33-12



JRIN33-27



JRIN13-12



JRIN14-27



JRIN34-12C



JRIN20-27



BUBR29-12



BUBR21-26



BUBR38-12



BUBR39-27



BEAR14-27



BEAR14-12



BUBR29-12,BUBR38-12,BUBR28-12,BUBR33-12



BUBR41-26



BUBR04-26



BUBR48-12



BUBR48-27



CIRR04-27



BUBR49-12C



BUBR49-27



BEAR10-12



BEAR11-27



BEAR12-12



BEAR16-12



BEAR33-12C



CIRR05-27



EUTR02-31



EUTR02-27



EUTR02-31



EUTR03-12



BEAR05-0,BEAR16-12,BEAR05-0



EUTR04-12



EUTR05-27



MUFR02-14



MUFR02-31



BEAR33-12C



JRIN017-27



JRIN01-27



JRIN02-12



JRIN01-27



JRIN16-12C



JRIN17-12



JRIN25-27



JRIN26-12



JRIN07-12



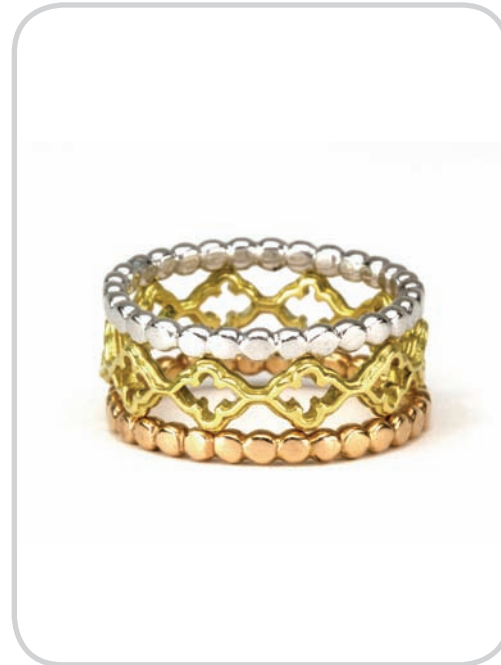
JRIN09-27



JRIN29-27



CIRR01-0



MARR04-0



CIRR02-12



CIRR03-12



BEAR04-27



HONR01-0



BUBR22-12



HONR03-27



MARR01-0 (X2)



MARR02-0 (X3)



MARR04-0 (X2)



MARR03-0



VINR01-0



BAMR03-27



BAMR03-12



BRAR03-0



BRAR01-0



BRAR02-0



FEAR01-0



BEAR18-0, BAND10-12



BAND04-0



BAND03-0



BAND02-0



BAND01-0



BUBR35-0 & BUBR36-0



BAND06-0



BAND12-0



BAND11-0



BUBR35-0



BUBR36-0



BAND07-0



BEAR06-0



BEAR18-0



BEAR39-0



CLOR05-0



CLOR04-12



CLOR03-26, CLOR02-12 (X2)



CLOR13-12



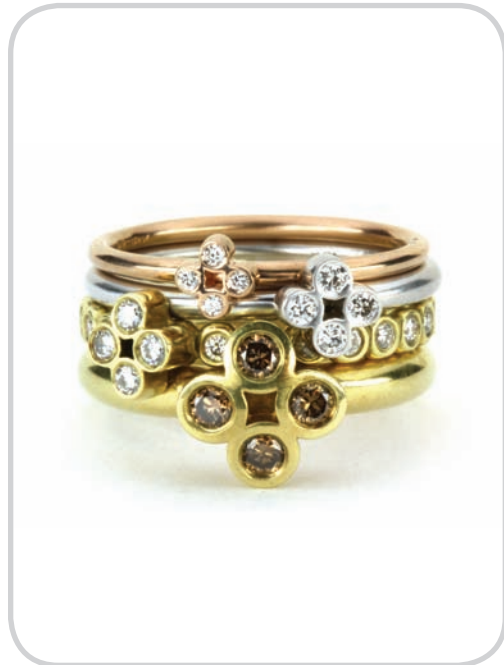
CLOR02-12



CLOR12-12



CLOR07-12



CLOVER RINGS



CLOR06-12



CLOR09-27



CLOR09-12



CLOR08-12



CLOR14-12



BRAR04-12C



BRAR04-27



BRAR04-12C



BEAR25-0



BAND1-12C



BEAR19-27



BAMR05-12



BUBR55-27



BAMR05-26



BUBR45-12



BEAR01-12



BEAR28-26



BEAR05-0, BEAR08-26, BEAR08-12C, BUBR16-0



BUBR51-12



BEAR07-12



BEAR08-27



BEAR35-12



BEAR34-12C



BEAR34-27



BEAR22-27



BEAR40-12C



BEAR24-0



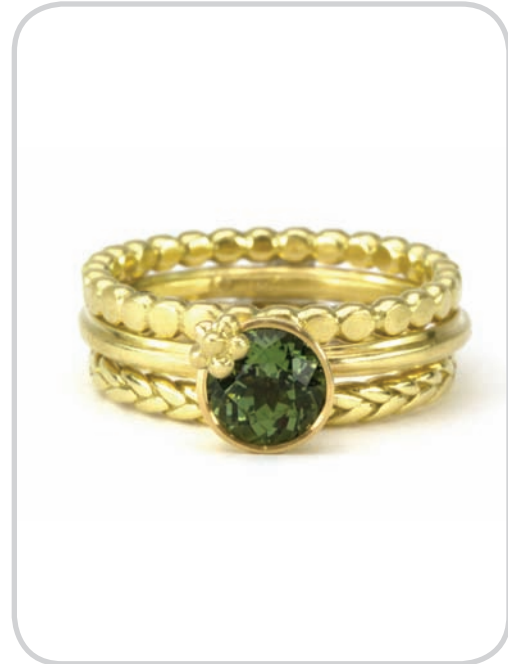
BEAR30-0



BEAR37-0



BEAR29-27



BAND13-27, BAND35-9, BRAR03-0



BEAR31-12C



BEAR38-0



JRIN31-0



BUBR53-27



BEAR34-27, BEAR18-0, BEAR05-0, BEAR36-0



BEAR20-27



FEAR03-31



FEAR02-0



BEAR27-0



BEAR42-31



BAND14-0



JRIN30-27



BAND08-0



SETR04-0



SETR05-0



BUBR14-27



BUBR42-27



BUBR23-27



BUBR46-27



BUBR23-12



BUBR31-27



BUBR31-33



BUBR48-27, BUBR53-27



BUBR50-31



BUBR17-27



BUBR44-12C



BUBR44-27



BUBR09-27



BUBR08-27



BUBR52-12C



BEAR21-0



BAMR07-0



BAMR04-27



BAMR06-0



HONR04-12C



BAMR04-0



LOTR06-12C



LOTR06-12



LOTR01-14



WRER01-27



LOTR05-12C



JRIN10-30



LOTR03-31



LOTR02-31